



Misterine App 1.6.5

User Manual



Table of Contents



| | |
|---|----------|
| ● About the Misterine App | 1 |
| ● Functionality of the Misterine App | 2 |
| ▶ Learn Functions | |
| ▶ Main Menu | 2 |
| ▶ Server Login | 3 |
| ▶ QR/Barcode Scanner | 4 |
| ▶ Online vs Downloaded | 5 |
| ▶ Settings | 6 |
| ▶ Select an AR Process | |
| ▶ Folders and Processes | 7 |
| ▶ Search / Order by | 8 |
| ▶ Browse an AR Process | |
| ▶ Process Download | 9 |
| ▶ Process Detail | 10 |
| ▶ Process Deletion | 11 |
| ▶ Play an AR Process | |
| ▶ Start an AR Scene | 12 |
| ▶ AR Scene Orientation | 13 |
| ▶ Display AR Objects | 14 |
| ▶ Touch Mode | 15 |
| ▶ Marker Mode | 16 |
| ▶ Control an AR Scene | 17 |
| ▶ Complete Tasks | 18 |



About the Misterine App

The Misterine App is a free AR mobile application available for iOS and Android. It is a part of Misterine AR platform which consists of 3 applications: Misterine Studio (desktop no-code AR authoring tool), Misterine Server and Misterine App (AR mobile application). The AR contents created in Misterine Studio (a.k.a. AR processes) are uploaded to Misterine Server and presented as a sequence of multimedia and 3D augmentations in the Misterine App.

What You Can Do:

- Find an AR process by using keywords
- Find an AR process by QR code or barcode
- Play an AR process offline once being downloaded to a device
- View AR processes in the public folder anonymously
- View AR processes in the private folder as an authorized user (login)
- Select a tracking mode (play with or without an AR marker)
- Overlay AR objects on a pre-determined spot of real objects
- Display AR objects anywhere you wish
- Follow step-by-step AR instructions and complete tasks
- Take photo evidence for certain tasks
- Browse additional referential information (PDFs, web resources, images, etc.)
- Share a work log via email after all the tasks are completed
- Change a language (English, Japanese, Chinese, Russian, Czech)

Supported Devices:

- Supported devices are tablets and smartphones that run on iOS or Android. (User must allow use of the device camera)
- For Android, devices must support Augmented Reality extensions. (Reference: <https://developers.google.com/ar/devices>)
- For iOS, all devices after the 5th generation are supported.
- Android devices need to have at least Android 9.0 "Pie" installed, iOS needs version 12.0 or higher



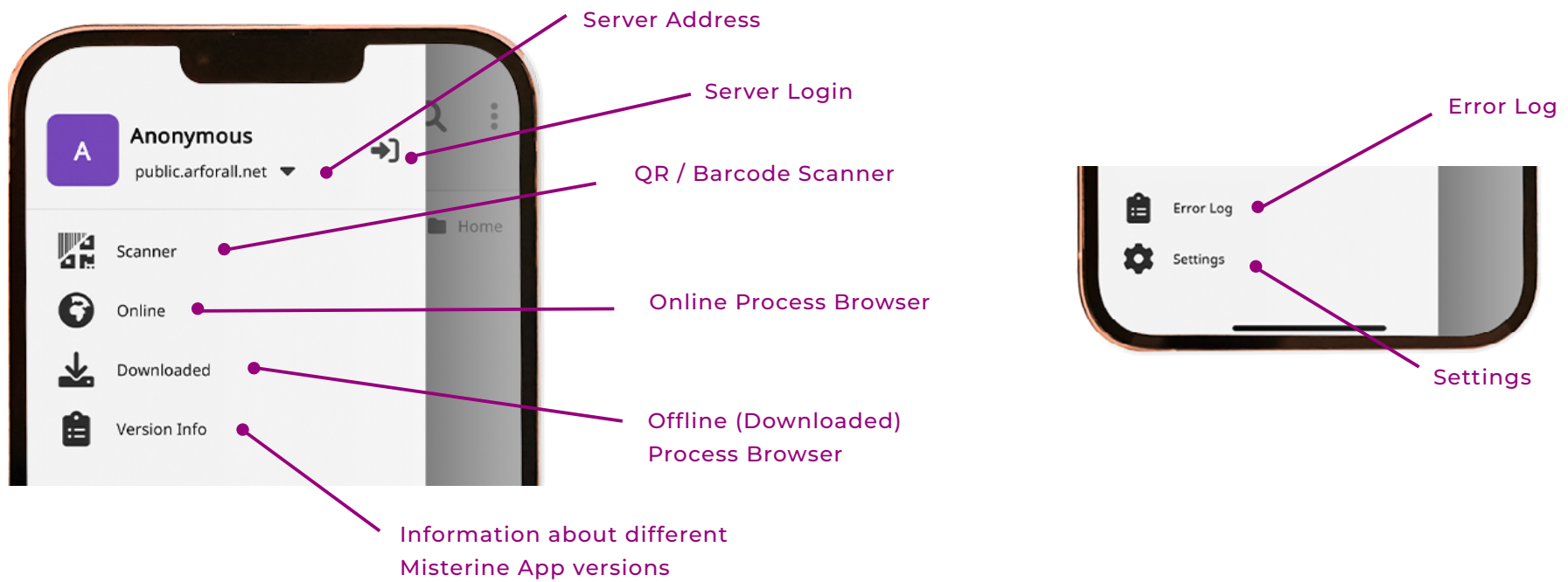


Functionality of the Misterine App

☰ Main Menu

Pressing the 3 lines on the top left opens up the main menu.

Here the user can find the Login Info as well as other tabs with which they can navigate through the app.

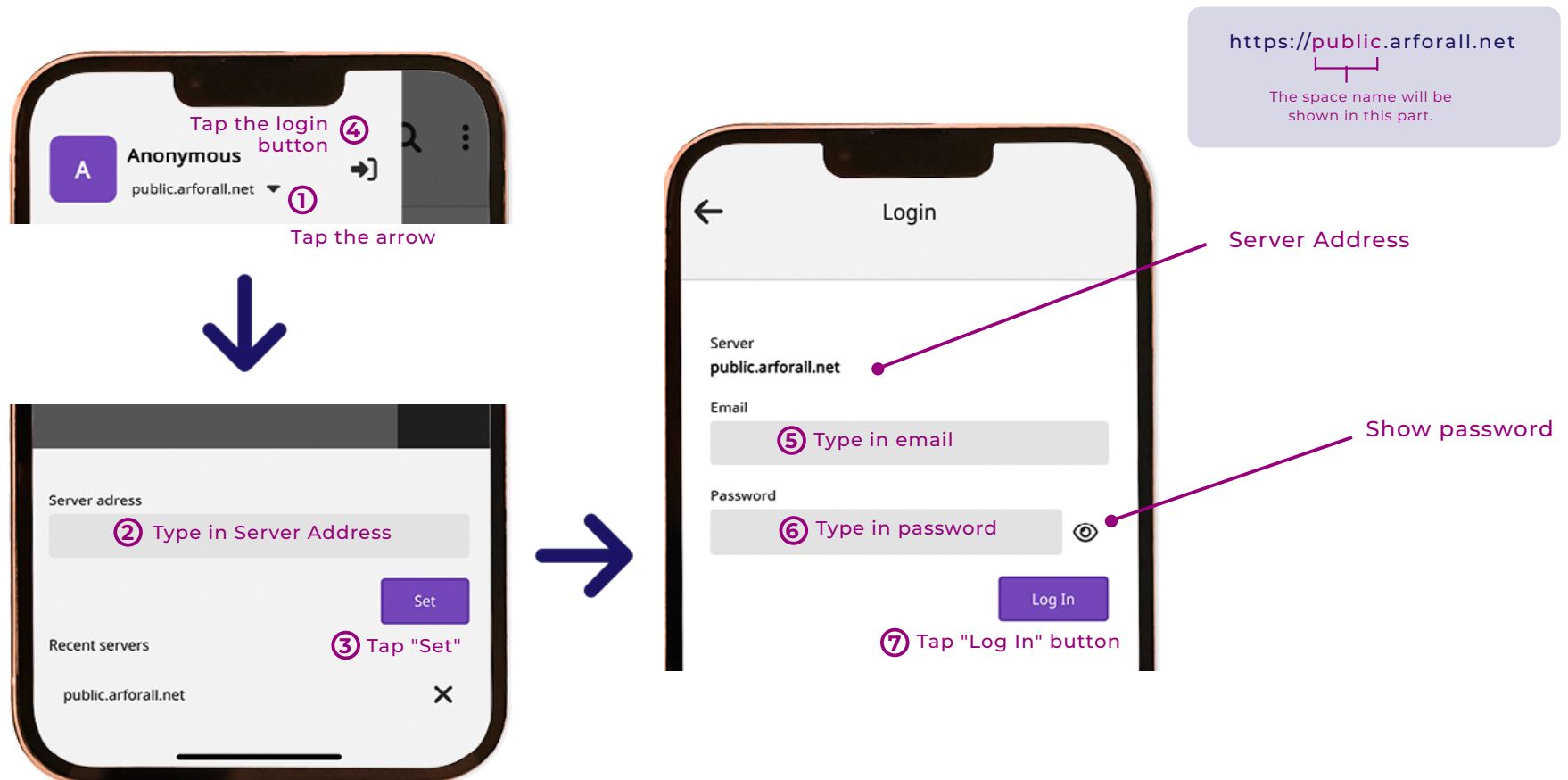




Functionality of the Misterine App

➔ Server Log In

After registering your e-mail address and password, enter the required information on the login page to log in.
The URL of the login page varies depending on the assigned server address.

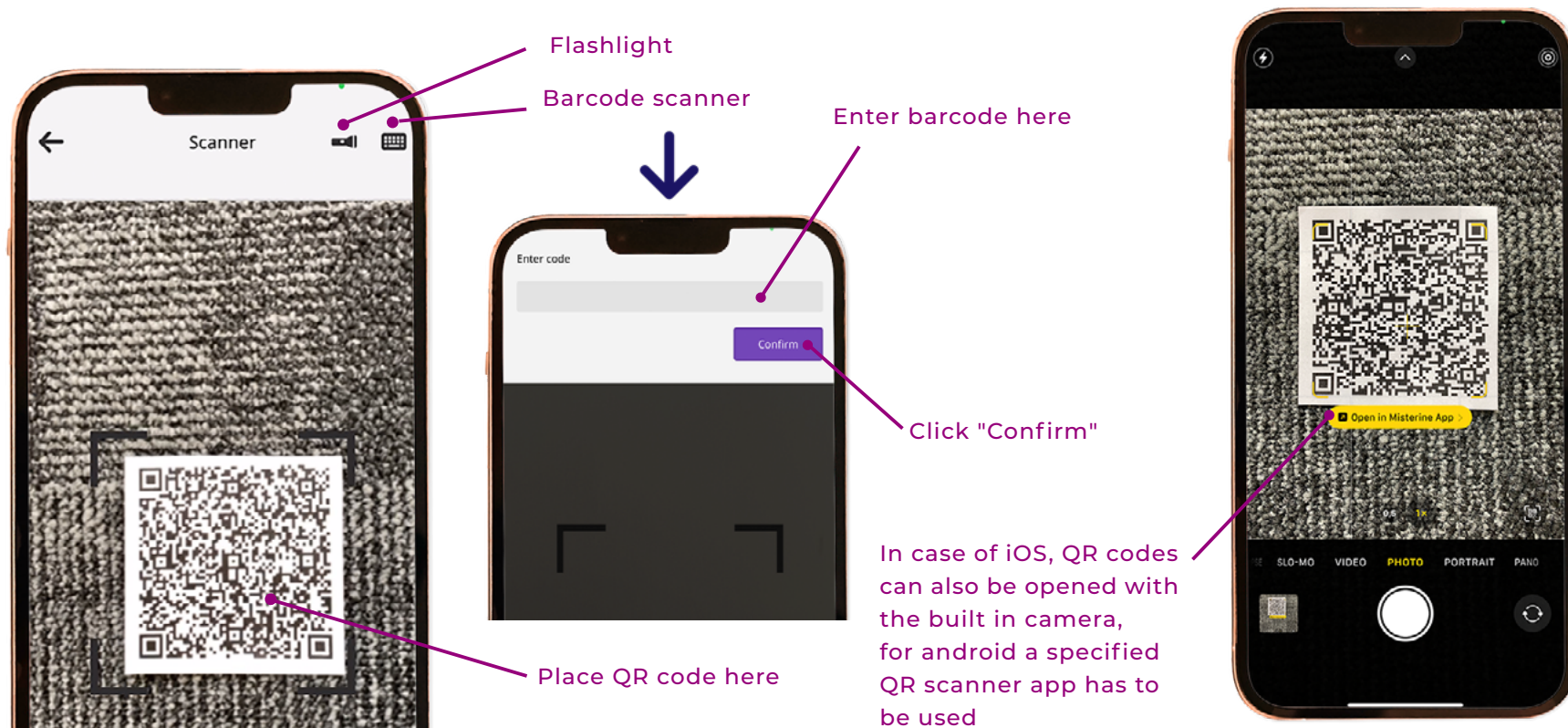




Functionality of the Misterine App

QR / Barcode Scanner

After tapping the Scanner in the menu, the QR code scanner will be opened. A QR code can be scanned in the middle of the highlighted area. Alternatively, a process can be opened by entering a barcode after pressing the keyboard button.

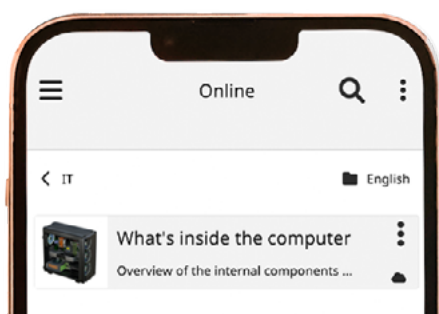




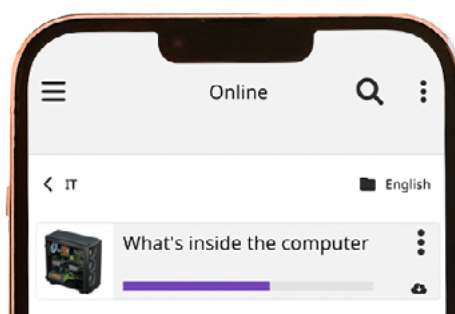
Functionality of the Misterine App

Online vs Downloaded

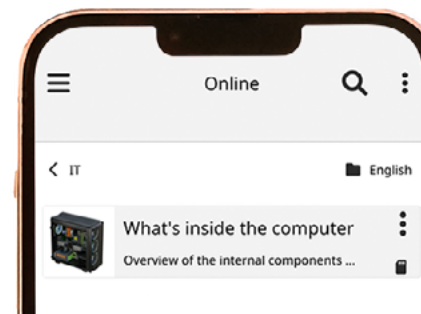
Tapping the **Online** button on the main menu will display all available processes on the selected server (only when network connection is available). Once a process has been downloaded, it is saved in the **Downloaded** folder. Processes in the Downloaded folder can be played offline.



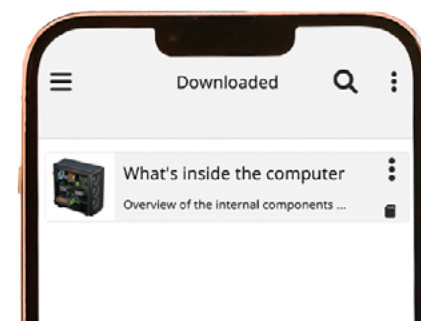
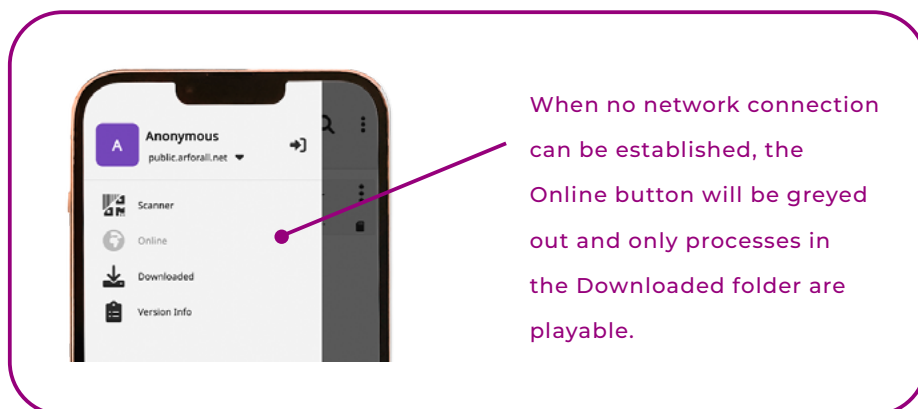
① Tap on the process or the options to download the process



② Wait until the process is downloaded



③ You can now open the process by clicking on it



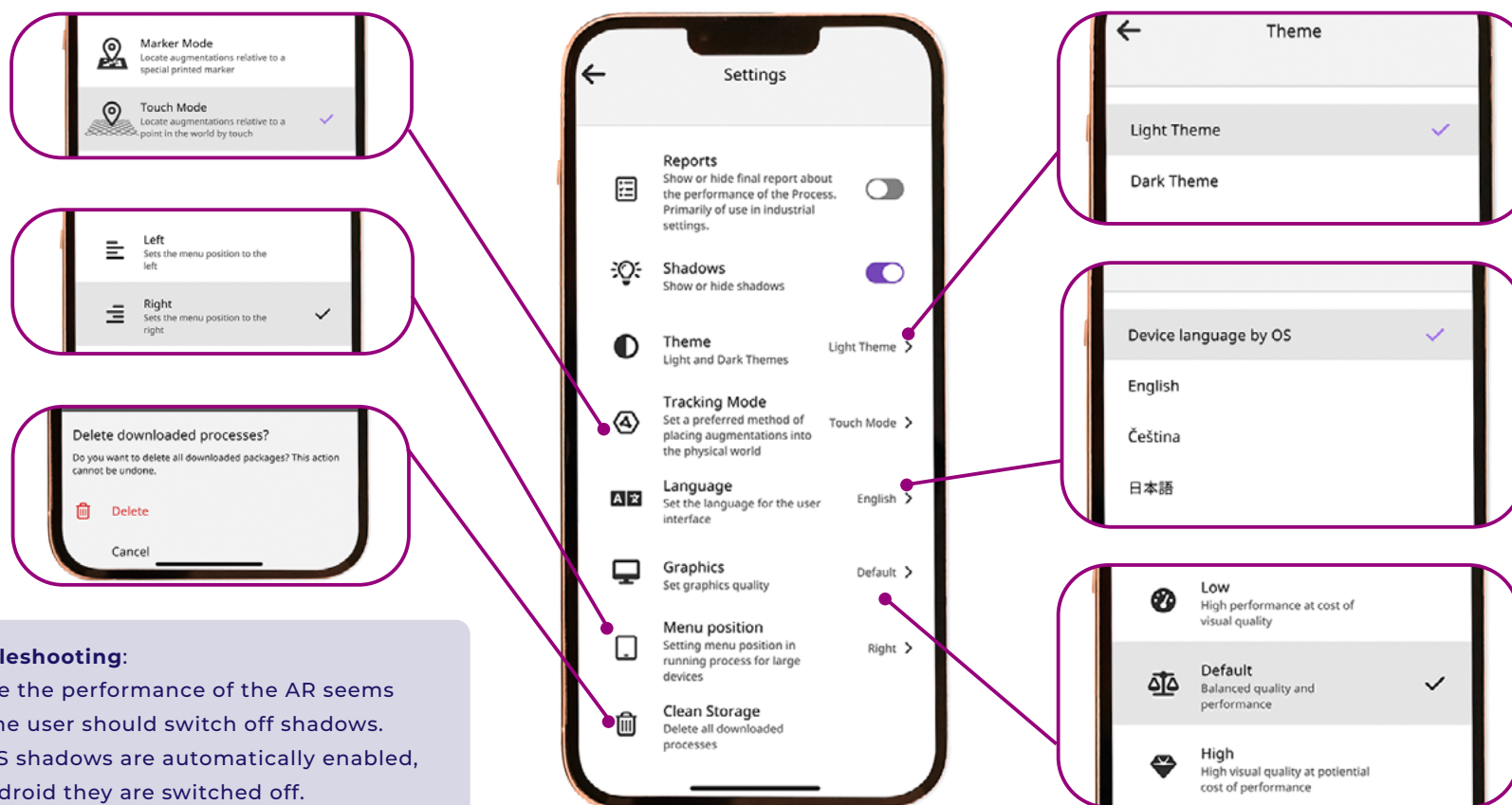
④ Alternatively, you can find the process in the Downloaded tab, where it is available even offline



Functionality of the Misterine App

⚙️ Settings

After tapping on the Settings button in the Main Menu, the settings options will be opened. There, multiple options appear, such as the option to turn on and off reports, shadows, choose a theme, set a preferred tracking mode, set preferred menu position, set a language of the app and delete all downloaded data.



Troubleshooting:

In case the performance of the AR seems low, the user should switch off shadows. On iOS shadows are automatically enabled, on Android they are switched off.



Functionality of the Misterine App

Folders and Processes

The folder structure and AR processes in the server can be viewed in the Online tab. The user can see only the folders which they have access to. Each folder may contain processes, which can be downloaded and played. To access process options, click on the three dots on the right side of the process.

The diagram illustrates the app's interface for viewing folders and processes. It features three smartphone screens and several explanatory text blocks.

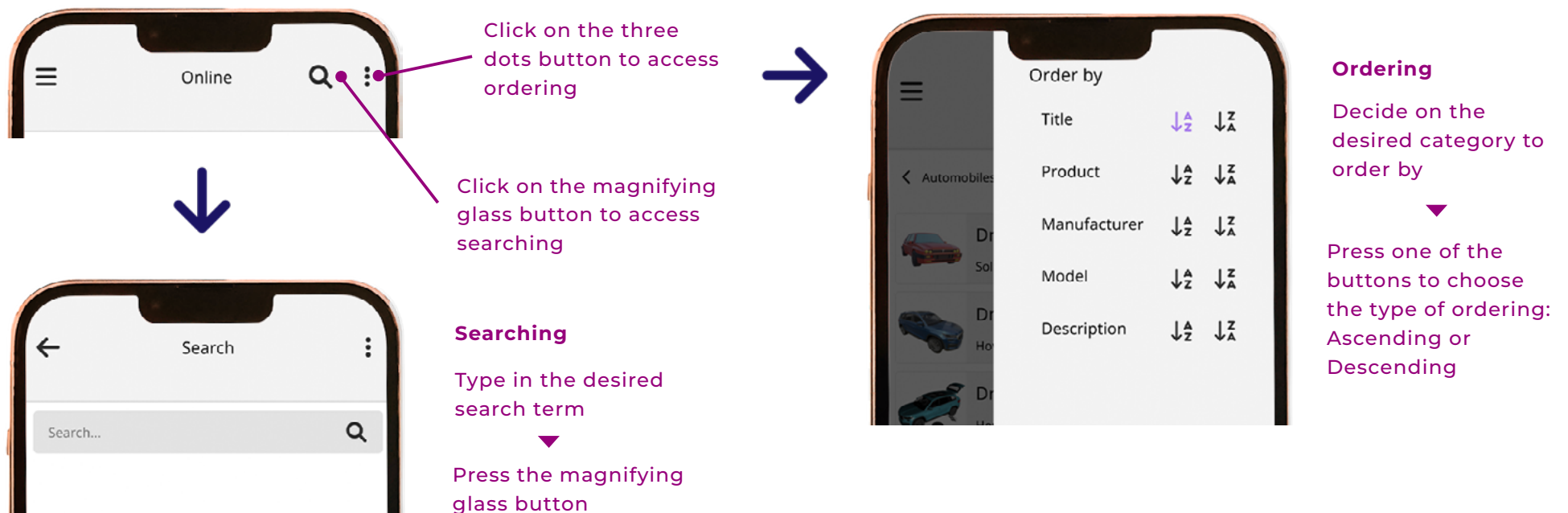
- Left Screen:** Shows the 'Online' tab with a 'public' folder selected. A 'Root folder' label points to the top navigation bar. A 'Parent folder' label points to the 'Business' folder icon. Below, a grid of folders is shown: 'Assembly', 'House', 'Mainten...', and 'Marketi...'. A label 'The folders appear here' points to this grid. At the bottom, a document icon and the text 'No processes found' are visible.
- Middle Screen:** Shows the 'Online' tab with an 'Education' folder selected. A label 'If there are more folders than the screen can fit, other folders are accessible by sliding the folders panel to either side' points to the folder grid.
- Right Screen:** Shows the 'Online' tab with a 'House' folder selected. A list of processes is displayed: 'Apartment', 'Fredde Installation Manual', 'Gallant Installation Manual', 'Kitchen interior', 'Pergola', 'Solar panels on the roof', and 'Terrace'. A label 'Here is a list of all available processes in the current folder' points to the list. A label 'Process options can be accessed through here' points to the three-dot menu icon on the right of the 'Apartment' process. A legend box shows a cloud icon for 'not yet downloaded' and a document icon for 'downloaded and ready to use'. A label 'If there are more processes than the screen can fit, other processes are accessible by scrolling downwards' points to the list with a downward arrow below it.



Functionality of the Misterine App

Search / Order by

The user has an option to search by a desired term or to order the displayed processes in a certain way. The ordering is done by selecting the order category: Title, Product, Manufacturer, Model and a Description. These are all properties of a process that can be modified during the creation of a process.

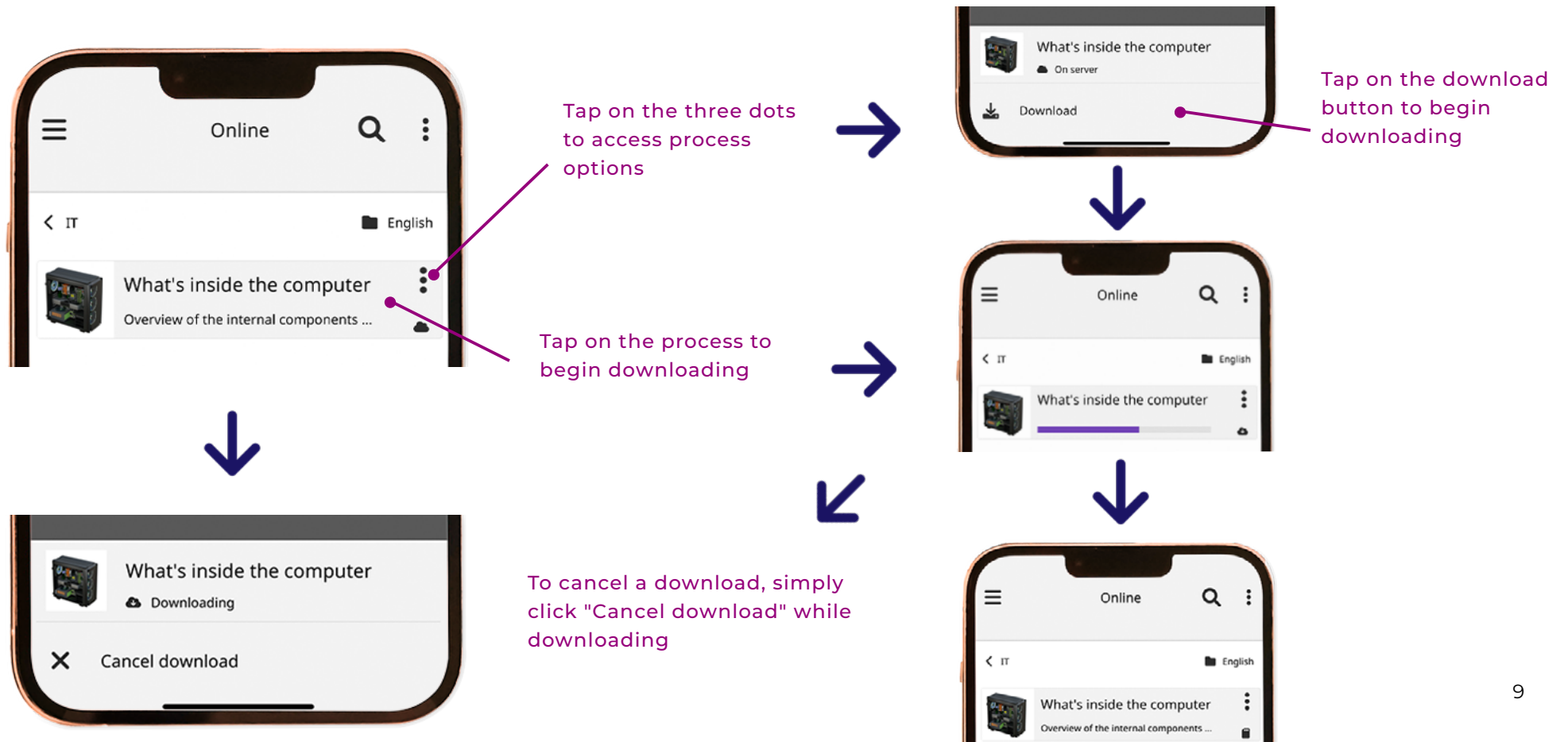




Functionality of the Misterine App

Process Download

To be able to start a process, it needs to be downloaded first. Downloaded processes can also be accessed offline in case there is no network connection available. These processes are stored in the Downloaded tab.

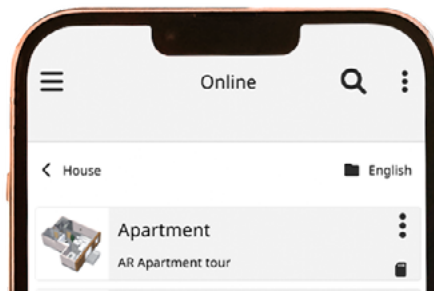




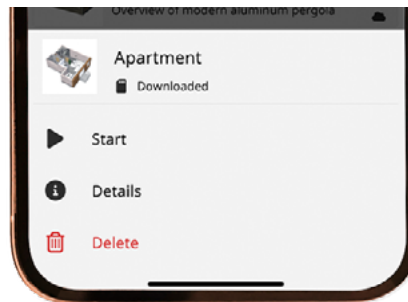
Functionality of the Misterine App

i Process Details

To assign process detail, click the options icon **⋮** and select "details" icon **i**.
All the information about a process is available in this tab or its subsequent tabs.



① Tap on the three dots to access process options



② Click on the Details button



Process thumbnail

Process title

Process description

Description of Process Detail Subcategories

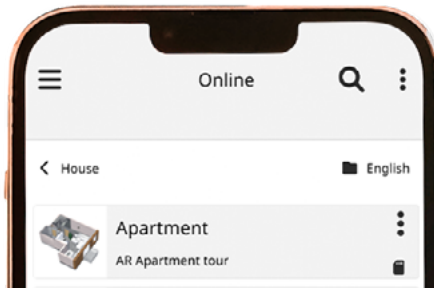
- **Spares** A list of spare parts.
- **Tools** A list of necessary tools for the process.
- **Consumables** A list of consumable items used in the process.
- **Figures** Any figures relevant to the process.
- **References** Links to other processes or information regarding the process.
- **Resources** Files that are relevant to the process.

Functionality of the Misterine App

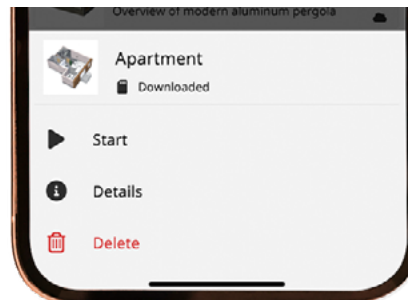


Process Deletion

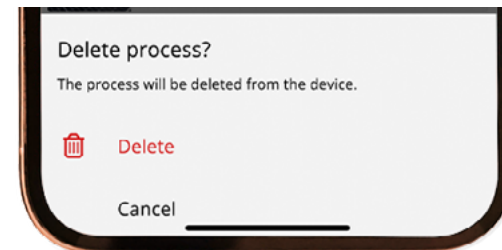
An option to delete a process exists for cases when a process is not necessary anymore. This can be done through the Options menu. Deleting a process deletes the local copy of the process, however no data on the server is deleted.



① Click on the three dots to access process options



② Click on the Delete button



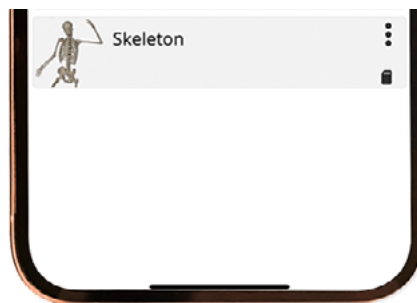
③ Click on the Delete button again



Functionality of the Misterine App

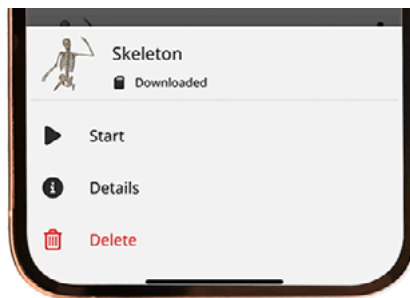
▶ Start an AR Scene

To start an AR scene, simply tap on an already-downloaded process or select process options and click the Start button.



Tap on the process

Tap on the three dots to access process options



Tap on the Start button



Functionality of the Misterine App



▶ AR Scene Orientation

The 3D scene supports both the portrait and the landscape mode.
Rotate the phone to automatically change the orientation of the AR scene.





Functionality of the Misterine App

Display AR Objects

Touch/Marker mode determines how an object is mapped to the real world. To switch between modes click on the first button in the menu panel to switch to an opposite of the current mode.

Touch mode maps virtual objects on vertical or horizontal planes, the user dictates exactly where it is positioned.

Marker mode looks for a special AR marker and positions the objects relatively to the marker.

 Touch mode

 Marker mode



To switch to Marker mode, click this button



To switch to Touch mode, click this button

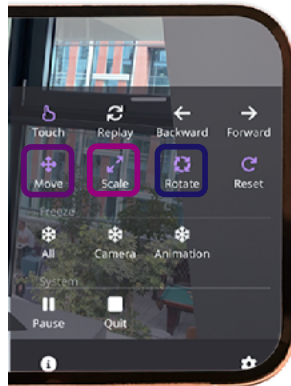




Functionality of the Misterine App

👉 Touch Mode

To scan the surface, look around the environment with device camera. Once the environment is mapped, mesh pattern will be shown on the flat surfaces. Tap somewhere on the mesh pattern to display the object. Touch mode provides functionalities such as Move, Rotate, Scale and Reset (a complete reset of the scene).



MOVE
SCALE
ROTATE

Tap or drag on the grid to move the model to desired position



To resize the scene use this slider to adjust the scale

Slide along the screen to rotate the model



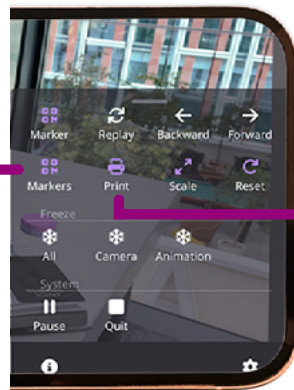


Functionality of the Misterine App

Marker Mode

Place the correct AR marker on a surface (pre-determined location) and look at it with device camera to display the object.
Marker mode provide functionalities such as Markers, Print, Scale and Reset (complete reset of the scene).

Click here to show the list of markers available in this scene



All available markers can be exported for print from here

To resize the scene, use this slider to adjust the scale

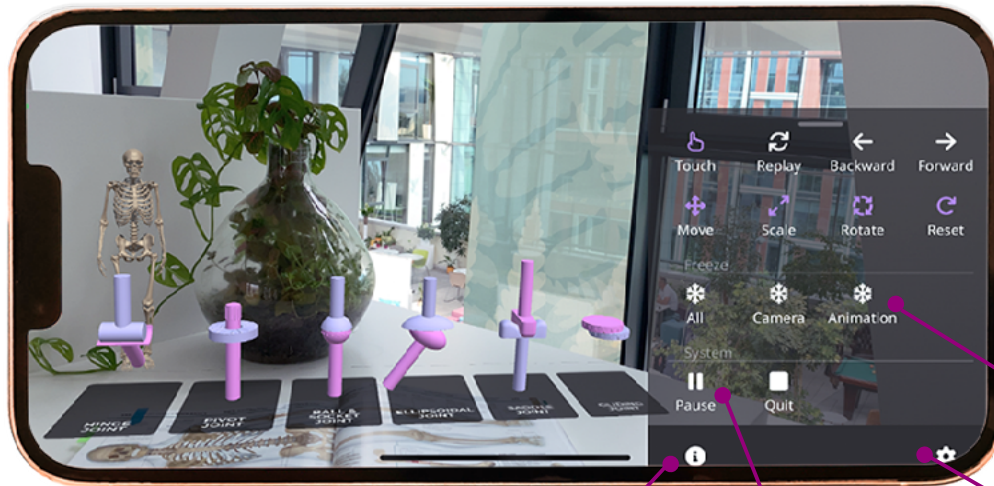




Functionality of the Misterine App

⚙️ Control an AR Scene

To enter the AR control menu, pull the menu up by the dragger. Here, multiple control options and settings are available.

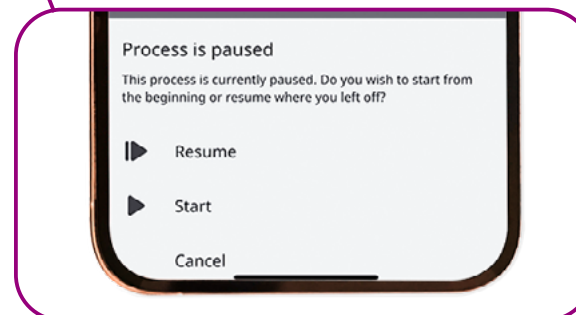


| | | |
|--|--------------------------|---|
| | Freeze all | This option freezes both animation and camera |
| | Freeze camera | This option freezes the camera but animation continue to play |
| | Freeze animations | This option freezes animations but the camera works as usual |

The Process Information leads to Process Detail page, refer to the relevant page for more information

Click here to access settings, refer to the relevant page for more information

The "Pause" option allows to pause the process. When you play the same process next time, you can either resume the process where it was paused or start over.





Functionality of the Misterine App

🚩 Complete Tasks - 1/3

A process can be finished by completing all the steps.

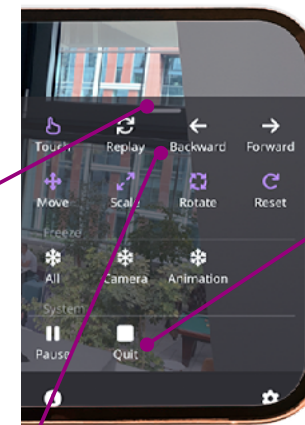
A process may also be finished prematurely through the menu, which can be accessed by pulling the dragger upwards.

A link to a figure relevant to this task of the process

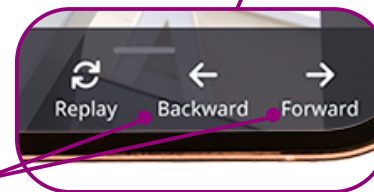


Collapse/Expand the Process instructions

Collapse/Expand the Control menu



A process can also be ended from the process menu at any time



Step backwards and forwards

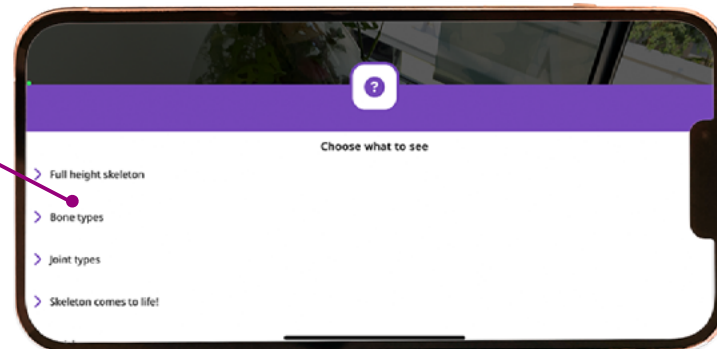


Functionality of the Misterine App

🚩 Complete Tasks - 2/3

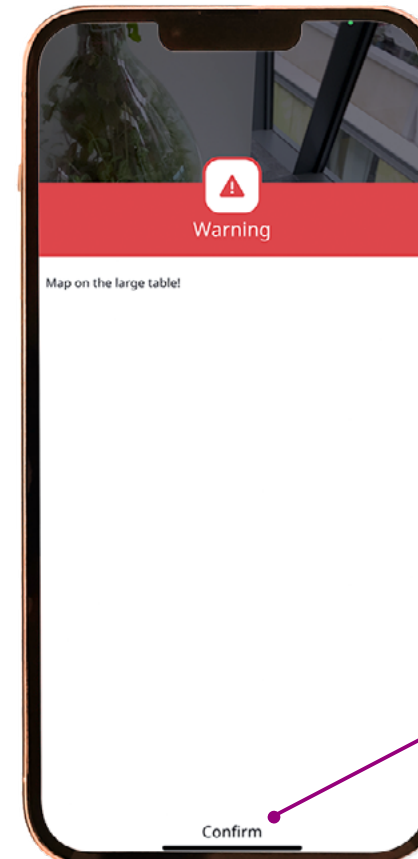
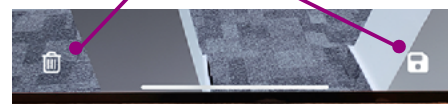
A process can contain special steps, such as a decision point step or a step where a picture needs to be taken.

Certain tasks can include decision points which effect how the rest of the process plays out



Certain tasks require that the user takes a picture

The picture then can be submitted or trashed in case of retaking



Certain tasks can include warnings, which include crucial information about the process. Press confirm to close the warning



Functionality of the Misterine App

🚩 Complete Tasks - 3/3

After completing all steps, a task report may be shown showing information about the user's navigation through the process.



At the last step of the process, the flag icon will be displayed on the right



If task reports are enabled or the process has mandatory task reports, a task report is shown after finishing a process

The option to share the task report



The option to view the taken photo



Misterine s.r.o.
info@misterine.com
www.misterine.com

Head Office Prague
Karolinská 661/4
186 00 Praha 8, Czech Republic

Branch Office Ostrava
28. října 1142/168
709 00 Ostrava, Czech Republic